

## Time Signature: $\frac{4}{4}$ Meter

A time signature (sometimes called a *meter signature*) is a set of numbers which appear at the beginning of a piece of music.

**4** The top number shows the number of beats per measure.

**4** The bottom number shows the kind of note that represents the beat (4 means quarter note).

CD 25  
Ex. 1

Sing: Do Re

## Introducing *Mi*

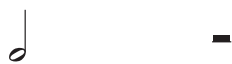
*Mi* is the upper next-door neighbor to note to Red. If Do is the note F and Red is the note G, then *Mi* is the note A.

F Do G Re A Mi

CD 26  
Ex. 2

Sing: Do Mi

## Half Note and Half Rest



Half Note      Half Rest

A *half note* represents *two* beats of sound when the quarter note represents the beat.

A *half rest* represents *two* beats of silence when the quarter note represents the beat.

CD 26  
Ex. 3

Sing: Do

CD 26  
Ex. 4

Sing: Mi