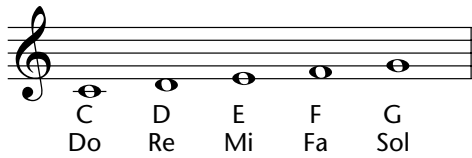
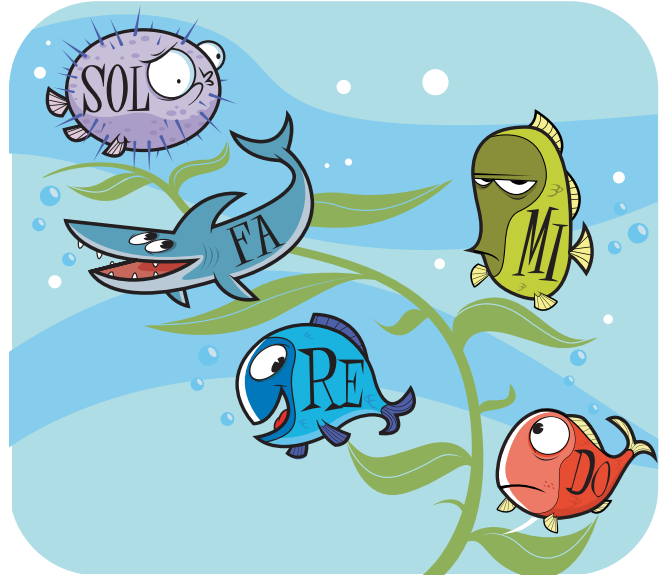




by Audrey Snyder

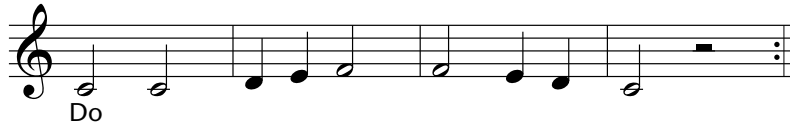
Adding Fa and Sol

This page corresponds to pages 30 and 31 in the January/February 2006 magazine.



CD 27

Ex. 1



CD 27

Ex. 2



Adding Dotted Half Notes, Whole Notes and Whole Rests

CD 28

Ex. 3



Ex. 4



CD 27

Ex. 5



CD 28

Ex. 6



Track numbers refer to the CD included in the January/February 2006 magazine.

The original subscriber of Music Express has permission to reproduce this song for instructional use only.