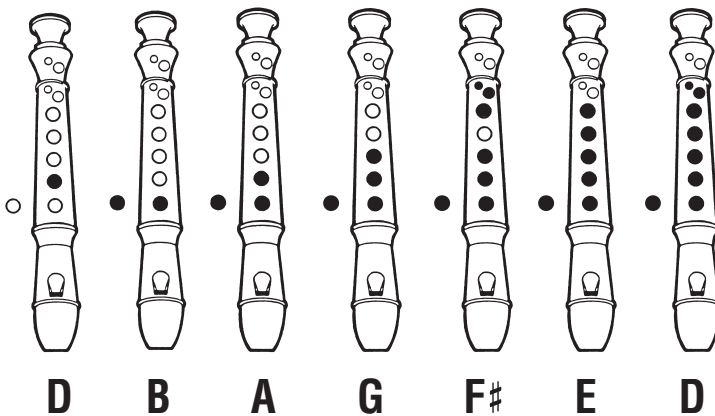




# the recorder report

By Janet Day



The Recorder Reporter says this is what you need to know to play "Michael Finnegan":

- Recorder fingerings for D, B, A, G, F#, E, D
- $\frac{4}{4}$  time signature
- *mf*
- 1st, 2nd, 3rd and 4th endings
- Tempo changes on each repeat

REPORTER'S NOTE: Practice your fingerings wisely before playing along with recording. Each time you repeat the melody, the tempo gets faster! Can you keep up?

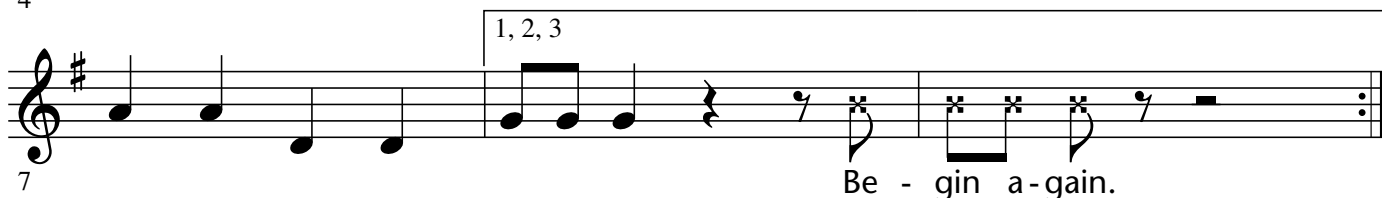
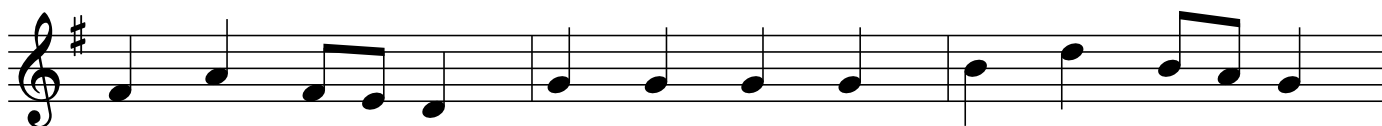
## Michael Finnegan

4 beat intro

Traditional Folksong  
Arranged by JANET DAY

Lively (each time getting faster) (♩ = 120, 138, 152, 168)

Play 4 times



Copyright © 2009 by HAL LEONARD CORPORATION  
International Copyright Secured All Rights Reserved

The original subscriber of *Music Express* magazine has permission to reproduce this page for instructional use only. Any other use is strictly prohibited.

# Michael Finnegan

Traditional Folksong  
Arranged by JANET DAY

Lively (each time getting faster) (♩ = 120, 138, 152, 168)  
Play 4 times

Mallets *mf*

4

7

10

1, 2, 3

Be - gin a - gain.

Don't be - gin a - gain!

Detailed description: This block contains the musical notation for the mallet part of the song. It consists of three staves of music in 4/4 time, with a key signature of one sharp (F#). The first staff starts at measure 1 and ends at measure 4. The second staff starts at measure 5 and ends at measure 7, with a first ending bracket over measures 6 and 7. The third staff starts at measure 8 and ends at measure 10, with a second ending bracket over measures 9 and 10. The lyrics 'Be - gin a - gain.' are written below the second staff, and 'Don't be - gin a - gain!' are written below the third staff. The dynamic marking *mf* is placed below the first staff.

Copyright © 2009 by HAL LEONARD CORPORATION  
International Copyright Secured All Rights Reserved

The original subscriber of *Music Express* magazine has permission to reproduce this page for instructional use only. Any other use is strictly prohibited.

# Michael Finnegan

Traditional Folksong  
Arranged by JANET DAY

Lively (each time getting faster) (♩ = 120, 138, 152, 168)  
Play 4 times

Tambourine *mf*  
Percussion *mf*  
Drum

4

7

10

1, 2, 3

Be - gin a - gain.

Be - gin a - gain.

Don't be - gin a - gain!

Don't be - gin a - gain!

Detailed description: This block contains the musical notation for the percussion part of the song. It consists of three staves of music in 4/4 time, with a key signature of one sharp (F#). The first staff starts at measure 1 and ends at measure 4. The second staff starts at measure 5 and ends at measure 7, with a first ending bracket over measures 6 and 7. The third staff starts at measure 8 and ends at measure 10, with a second ending bracket over measures 9 and 10. The lyrics 'Be - gin a - gain.' are written below the second staff, and 'Be - gin a - gain.', 'Don't be - gin a - gain!', and 'Don't be - gin a - gain!' are written below the third staff. The dynamic marking *mf* is placed below the first staff.

Copyright © 2009 by HAL LEONARD CORPORATION  
International Copyright Secured All Rights Reserved

The original subscriber of *Music Express* magazine has permission to reproduce this page for instructional use only. Any other use is strictly prohibited.