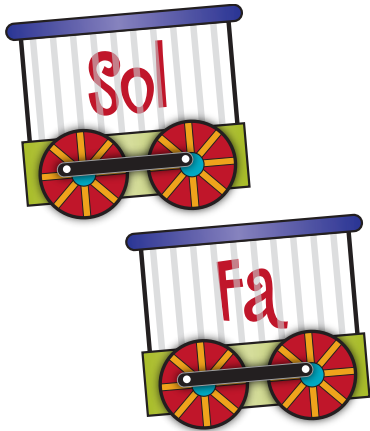
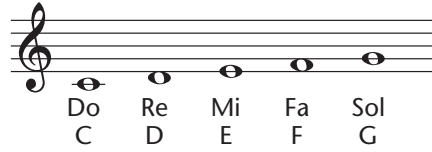


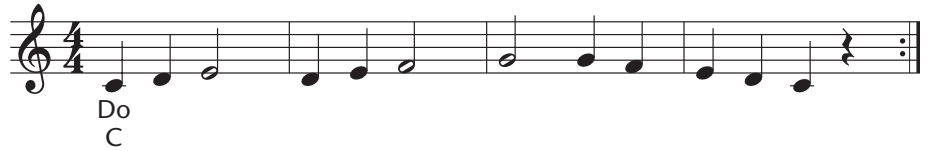
# ALL ABOARD!



## Adding Fa (F) and Sol (G)



CD 23  
Ex. 1

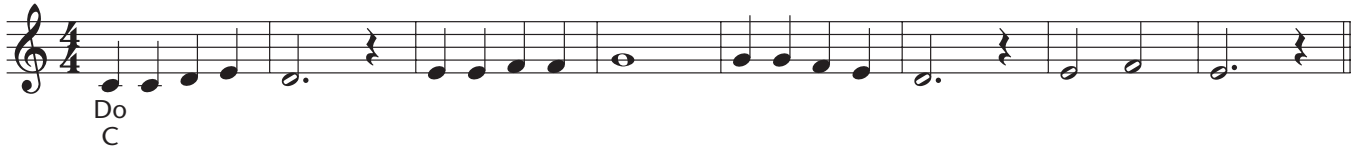


CD 23  
Ex. 2



## Adding Dotted Half Notes, Whole Notes and Whole Rests

CD 24  
Ex. 3



CD 24  
Ex. 4



CD 23  
Ex. 5



CD 24  
Ex. 6



Copyright © 2009 by HAL LEONARD CORPORATION  
International Copyright Secured All Rights Reserved

The original subscriber to *Music Express* magazine has permission to reproduce this page for educational use only. Any other use is strictly prohibited.